

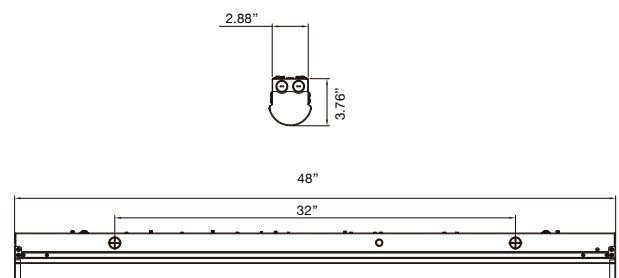
LINEAR Series

Low Bay Light



The LINEAR series provides aesthetic and performance choices, integrated controls options and innovative mounting accessories for commercial, retail, manufacturing, warehouse, cove, and display applications, when paired with occupancy sensors, dimming intuitive controls, you save energy and extended the life of the fixture.

DIMENSIONS



CONFIGURATOR

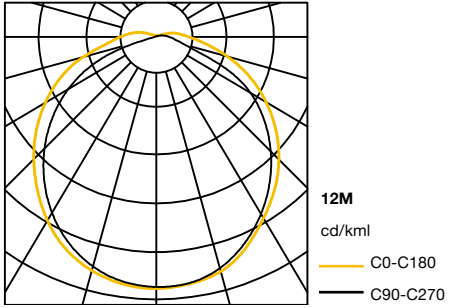
Model	Power	Optics	CCT	CRI	DRIVER	Elements	SPD	Class	RAL Color	Treatment
WLF02 Serie 1	35 W	12M	40K 4000K	7 70	27RE 100-277V, Reg0-10v	gg	PID	1 Class I	WH White RAL 9016	A2 250h AISI 304
	45 W		50K 5000K							** On request
	65 W									

Reference	5000K	
	Lumens	lm/ W
WLF02-35W12M-50K7-27RE-ggPID-1_WH-A2	>4 550	> 130
WLF02-45W12M-50K7-27RE-ggPID-1_WH-A2	> 5 850	> 130
WLF02-65W12M-50K7-27RE-ggPID-1_WH-A2	> 8 450	> 130

Power	Weight (lb)	Dimensions (inch)
35 W	5.73	48" x 2.88" x 3.76"
45 W	5.95	48" x 2.88" x 3.76"
65 W	5.95	48" x 2.88" x 3.76"

NOTE: The luminous fluxes may vary depending on the selected configuration of the luminaire due to the different possibilities of electrical isolation, available optics and colorimetric and binning parameters of the LED diode.

PHOTOMETRIC DIAGRAMS



ELECTRIC

Voltage range	100 ~ 277 VAC
Frequency range	50 ~ 60 Hz
Power factor	> 0,9 (@230 VAC máx. Load)
THD	< 15% (@230 VAC máx. Load)
Protection class	Class I
SPD	6 kV (controller) 10kV (single device)
NEMA base	Optional
System regulation	Dimmable 0 - 10 V, PWM

PHOTOMETRIC AND COLORIMETRIC

LEDs quantity	Variable
Efficacy	>130 lm/w
Color temperature	5000 K (other on request)
CRI	> 70 / > 80 (optional)
Lifetime	> 50 000 h
Flow emitted to the upper hemisphere	0%

OPERATION CONDITION

Working temperature	- 40°C ~ 50 °C
---------------------	----------------

MECHANICAL AND FUNTIONALS

Enclosure material	Injected aluminium
Optics material	Polycarbonate
Shield material	/
Body finish	Epoxy-polyester powder paint
Color	White RAL 9016. Other RAL color on request
IP rating	44
Installation	Electronic compartment access from the top .
Recommended installation height	6 - 8 m

STRUCTURE

Injected aluminum body with a neat aesthetic design that optimizes product performance.

FINISHED

External treatment of corrosion resistant metal casing on demand (ISO 9227). AISI 304 stainless steel hardware.
Possibility of manufacturing in different RAL colors and AISI 316 hardware.

OPTICS

Optics designed and manufactured in polycarbonate that offer symmetrical and asymmetric solutions to efficiently illuminate the different projects, complying with the most demanding lighting requirements.

ELECTRICAL

Available in three powers (35W, 45W and 65 W). Optimized electrical design to offer the customer an efficient end product of optimal quality.

INSTALLATION

Access to the electronic compartment from the top. (See product installation manual).

CERTIFICATES

CE, RoHS, cULus, UL, DLC listed.

NOTE:

Actual product performance may differ as a result of the end user application or environment. The values indicated have been measured under laboratory conditions at 25 °C. The specifications indicated in this document are subject to change without prior notice.



USA - 7825 NW 29th St. Suite 121, 33122 Miami, Florida, USA

Spain - Calle Paseo de la Habana 18, 28036 Madrid

Colombia - Cra. 9# 115 - 06, Ofic. 601, Edif. Tierra Firme, Bogotá, Colombia

Peru - Av. Grau 1380, Of. 314, Barranco, Lima, Perú